

**Aymroo**  
INNOVATE | CREATE | CONNECTProducts



**PVCplumbingFITTINGS**

**PRODUCT CATALOGUE**



# CONTENTS

## Aymroo Plumbing Fittings Catalogue

<b>INTRODUCTION</b>	<b>2</b>
Aymroo Plumbing Fittings	2
Quality Assurance	2
Large Diameter PVC Fittings Solvent Cement Jointing Procedure	3
<b>STORMWATER FITTINGS</b>	<b>7</b>
Elbow (Bend)	8
Junction	10
Boss Connector (Tapping Saddle)	12
End Cap	14
Flap Valve (Frog Flap)	14
In-line Flap Valve	15
Level Invert Taper (Level Invert Reducer)	15
Straight Coupling	16
Slab Repair Coupling	16
Slip Coupling (Repair Coupling)	17
Internal Coupling	17
Offsets	18
Downpipe Adaptor	18
Kerb Adaptor	19
Flanges (Undrilled)	19
Safe Waste Tray	20
Safe Tray (Hot Water Cylinder Safe Tray)	20
Pipe Slotting	21
<b>DWV SEWER FITTINGS</b>	<b>23</b>
Bend (Elbow)	24
Lobster Bend	26
Junction	27
Boss Connector	29
End Cap	31
Threaded End Cap	31
Access Caps (Locking and Threaded)	32
Bolted Trap Screw	32
Inspection Opening (Inspection Tee)	33
Clamp On Inspection Opening	33
Reflux Valve	34
Level Invert Taper (Level Invert Reducer)	34
Straight Coupling	35
Slab Repair Coupling	35
Slip Coupling (Repair Coupling)	36
Rubber Ring Adaptor	36
Access Chamber Coupling	37
Boundary Traps	37
Drop Junction (Drop Tee)	38
Drop Bend	38
Offsets	39
Flanges (Undrilled)	39
Vent Cowl	40
<b>SPECIALISED FITTINGS</b>	<b>41</b>
<b>GLOSSARY OF TERMS</b>	<b>42</b>
<b>INDEX</b>	<b>43</b>

## INTRODUCTION

### Aymroo Plumbing Fittings



Aymroo has been manufacturing PVC plumbing fittings in Australia, for the commercial and domestic markets, for over 20 years. From standard fabricated and moulded products to seemingly impossible one-off solutions, we've got it covered.

Since beginning operation Aymroo has been a key player in introducing new plumbing fittings to Australia and markets where AS/NZS Standards plumbing fittings and pipe are used, such as the PVC Maintenance Shaft System and plastic-encapsulated Step Irons.

As an ISO Quality Management System accredited and AS/NZS standards certified company, the quality of our products is always guaranteed.

Knowing that plumbers often require a fitting yesterday, we stock the most comprehensive range of large bore moulded and fabricated PVC plumbing fittings for immediate dispatch.

To further meet market needs, new and improved products are continually in development. In fact, it was in response to customer feedback that we decided to extend our range of fabricated fittings to include higher-quality moulded fittings.

Our Watermark-approved moulded Drain, Waste and Vent (DWV) fittings are not only stronger and completely uniform, but also better looking – an important factor in applications such as aerial drainage. They are the highest-quality DWV fittings available on the market.

If you can imagine it, we can make it! We've lost count of the times someone has searched high and low for a fitting that no other business will attempt to manufacture, only to find that Aymroo can make it in a matter of days. It is this flexibility that has made Aymroo the first point of contact for many customers looking for a particular product.



### Quality Assurance

Aymroo produces quality moulded and fabricated DWV and Stormwater fittings for plumbers, their merchants and the councils of Australia to the AS/NZS1260 and AS/NZS1254 standards under the control of ISO9001 Quality Management System.

Our Drain, Waste and Vent (DWV) fittings are Watermark certified. DWV Fabricated fittings are triple-welded for strength, fibreglass-reinforced for durability and gelcoated for a smooth finish and safer handling.

Aymroo moulded fittings are manufactured in best environmental practice BEP-uPVC resins. DWV moulded fittings are made to class SN6, in the colour Cloud Grey, with tapered sockets. Stormwater moulded fittings are moulded in Storm White with tapered sockets. Reflux Valves are manufactured to the requirements of AT55200.006 and are certified under Watermark Certificate 259.

## INTRODUCTION

### Large Diameter PVC Fittings Solvent Cement Jointing Procedure



#### Safety

- Solvent cement and primer fumes are hazardous and flammable.
- Ensure jointing is carried out in a well ventilated area with no ignition sources nearby.
- Do not smoke when using solvent cement and priming fluids.
- In the event of fire, smother with sand or earth or use suitable fire extinguisher.
- Do not mix solvent cement and primers and never add any other chemicals or agents to these products.
- Storage of solvent cement and primers should be in a cool place away from sources of heat and ignition.
- Keep solvent cement and primer solution containers sealed when not in use.
- Exposure of skin to solvent based products can lead to skin irritation, use solvent resistant gloves such as Ansell Smart Gloves.
- **If spilt on skin:** wash area completely with soap and water.
- Avoid contact with eyes:  
**If contact with eyes occurs,** flush with copious amounts of clean water.
- **If swallowed:** Do not induce vomiting if Solvent Cement or Priming Fluid is swallowed.
- **If poisoning occurs:** consult a doctor or Poisons Information Centre immediately.  
Australia Poison Information Centre: **13 11 26**  
New Zealand National Poisons Centre (1800 POISON): **1800 764 766**

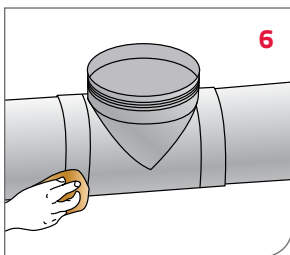
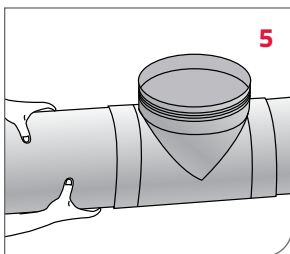
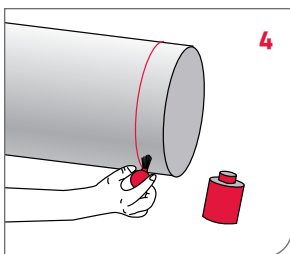
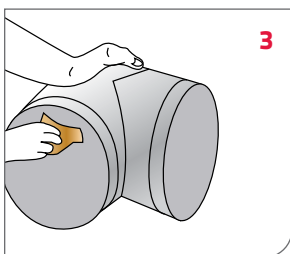
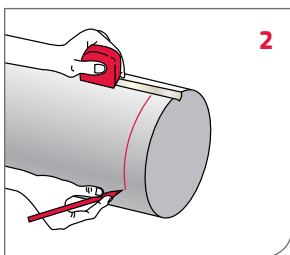
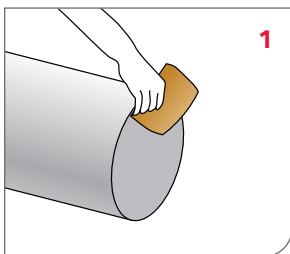
#### Solvent Cement & Primer

- Aymroo recommend slow-setting large diameter non-pressure Solvent Cements and Primers as large bore fittings require a little more time than joining smaller domestic size pipes and fittings.
- Priming is an important step in preparing for a good join. Primer cleans the fitting surface and also prepares it for permeation of the solvent cement into the fitting surface to create a strong join.
- Solvent cement is a solution mixture of resins and solvents which when applied, allow the surfaces of PVC pipes and fittings to chemically weld together as one.
- The correct amount of solvent cement will contribute to the strength of the join. Too little and the bond will be insufficient, too much and the pipe and fitting can be weakened.
- Cleaning excess solvent cement away is an essential house-keeping step to ensure a good join.
- Only use fresh solvent and primers as old, expired (12mths), off, contaminated or stringy solvent cement or primer will affect join strength.



## INTRODUCTION

### Large Diameter PVC Fittings Solvent Cement Jointing Procedure



#### Prepare fittings for joining

- PVC-U pipelines are easy to assemble.
- Solvent cement jointed pipe and fittings can be assembled external to the trench. The joints should be cured (5 minutes minimum) prior to lowering into the trench.
- While Aymroo rubber ring jointed fittings can be assembled external to the trench, lowering the assembled pipe and fittings into the trench must be done carefully to avoid joints pulling apart and all joints must subsequently be inspected.
- Make sure pipes, fittings and solvents are cool and close at hand - avoid joining pipe and fittings that have been subjected to high temperature due to the effects of thermal expansion.
- Ensure pipe spigot to be connected is cut square.
- Chamfer to remove burrs - burrs cause socket scoring and wiping of solvent cement which results in weak joints.
- Measure and mark insertion length on spigot end to ensure full insertion in the fitting socket.
- Clean surfaces to be joined. Use a clean dry cloth to first remove dust, dirt, grease and other surface contaminants.
- Prime the socket and spigot surfaces to be joined using a clean cotton cloth/ applicator to apply Primer solution.

#### Jointing process

- Use slow-setting large diameter non-pressure Solvent Cements and Primers.
- Use an appropriately sized brush or applicator for the diameter of pipes to be joined and apply an adequate amount of solvent cement to the socket first and then the spigot.
- Ensure the entire surface of each is covered in a film of solvent cement.
- Make sure that the amount of solvent cement used does not cause an overrun of fluid once the joint is made.
- Remove any excess solvent cement.
- Push the pipe and fitting together, using mechanical aid if required.
- Ensure the pipe spigot is inserted "fully home" to the base of the socket.
- Hold the joint force in position for 30 seconds until first bond is made.

#### Finishing

- Clean excess solvent cement from outer pipe surface.
- Leave jointed sections undisturbed in shade or a cool area for a further 5 minutes to ensure bond strength.
- Do not pressure or vacuum test joined section for at least 24 hours when full solvent bond has been reached.

## INTRODUCTION

### Large Diameter PVC Fittings Solvent Cement Jointing Procedure



#### Do's

- Cut pipe spigots square - using a mitre box/saw will help.
- Chamfer cut spigot ends to remove burrs - burrs will score socket surface.
- Keep pipe, fittings, primer and solvent cement cool and out of direct sunlight to achieve maximum working time with solvents and avoid thermal expansion and contraction of pipe and fittings.
- Always clean spigots and sockets to remove dirt, grease and contaminants.
- Always use primer - use a clean cotton cloth as synthetic cloth may be affected by primer solution and cause joint contamination.
- Use a suitable size brush/applicator to apply an even coat of solvent cement to the entire socket and spigot.
- Always push the spigot all the way home into the socket - this ensures the best fit and maximum strength.
- Use a mechanical aid for large pipes and fittings.
- Clean away any excess solvent cement.
- Hold the joint force secure for at least 30 seconds.
- Leave jointed section undisturbed for 5 minutes to ensure bond strength.

#### Don'ts

- Don't join hot pipes and fittings - avoid thermal expansion and contraction.
- Don't use old, expired, off, contaminated or stringy solvent cement or primer - it will affect joint strength.
- When marking off spigot do not score the pipe - it will affect pipe strength.
- Don't join dirty or wet spigots and sockets - it will affect joint strength.
- Don't use fast setting solvent cement on large diameter pipes and fittings.
- Don't allow a pool of solvent cement to form at the root of the socket - it can permeate too deeply and weaken the components of the joint.
- Don't use excessive amounts of solvent - it can affect the pipe and fitting.
- Don't use excessive force in joining pipe and fittings.
- Don't move joints for the first 5 minutes.
- Don't test until after 24 hours of joint cure - allow the joint to reach full strength.





# STORMWATER FITTINGS



**A**ymroo supplies an extensive range of both moulded and fabricated stormwater fittings to suit your specialised large diameter PVC plumbing needs.

Aymroo's Australian made large diameter moulded fittings are moulded in state-of-the-art injection moulding machines using the latest best environmental practice BEP-uPVC technology resins, to the requirements of AS/NZS1254 in Storm White colour.

Fabricated stormwater fittings are manufactured to AS/NZS1254, welded for strength and fibreglassed for durability. A top gelcoat layer is added to encase the fibreglass for strength, a smooth finish and safer handling.

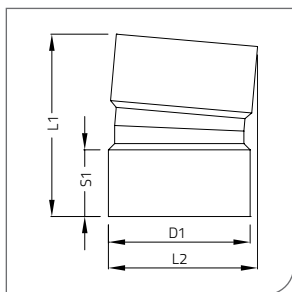
Solvent Cement Joint Female Sockets (SCJ F+F) are the standard fitting format unless specified. Fittings can be supplied with male end spigots for M+F and M+M formats upon request. Rubber Ring Joint (RRJ) fittings are also available on request. Inspection Openings can be supplied to most fittings right hand, left hand or rear access.

Dimensions nominal in mm unless specified. In the interests of constant product improvement, Aymroo reserves the right to vary specifications without notice. Please contact Aymroo for non-standard fitting formats and pricing.



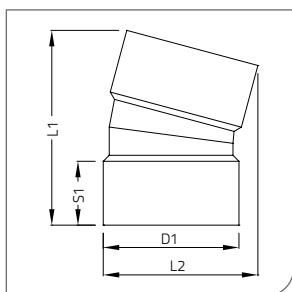
## STORMWATER FITTINGS

### Elbow (Bend)



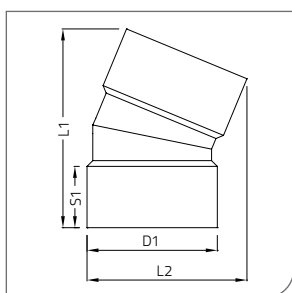
#### 5° Elbow Stormwater SCJ F+F (Bend)

CODE	DESCRIPTION	D1	S1	L1	L2
ELSW15005	150 X 5° S/W ELBOW	DN150	80	219	175
ELSW22505	225 X 5° S/W ELBOW	DN225	125	312	273
ELSW30005	300 X 5° S/W ELBOW	DN300	125	321	341
ELSW37505	375 X 5° S/W ELBOW	DN375	160	399	430



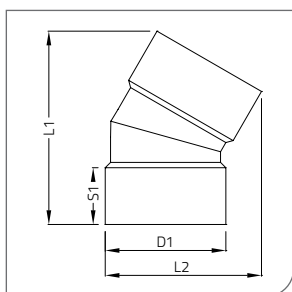
#### 15° Elbow Stormwater SCJ F+F (Bend)

CODE	DESCRIPTION	D1	S1	L1	L2
ELSW15015	150 X 15° S/W ELBOW	DN150	80	244	193
ELSW22515	225 X 15° S/W ELBOW (Moulded)	DN225	100	279	288
ELSW30015	300 X 15° S/W ELBOW	DN300	125	372	366
ELSW37515	375 X 15° S/W ELBOW	DN375	160	462	461



#### 22° Elbow Stormwater SCJ F+F (Bend)

CODE	DESCRIPTION	D1	S1	L1	L2
ELSW15022	150 X 22° S/W ELBOW	DN150	80	260	207
ELSW22522	225 X 22° S/W ELBOW	DN225	125	377	316
ELSW30022	300 X 22° S/W ELBOW	DN300	125	406	384
ELSW37522	375 X 22° S/W ELBOW	DN375	160	504	483



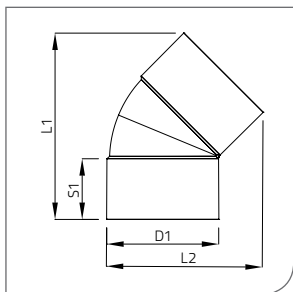
#### 30° Elbow Stormwater SCJ F+F (Bend)

CODE	DESCRIPTION	D1	S1	L1	L2
ELSW15030	150 X 30° S/W ELBOW	DN150	80	272	218
ELSW22530	225 X 30° S/W ELBOW	DN225	125	399	333
ELSW30030	300 X 30° S/W ELBOW	DN300	125	436	401
ELSW37530	375 X 30° S/W ELBOW	DN375	160	541	503



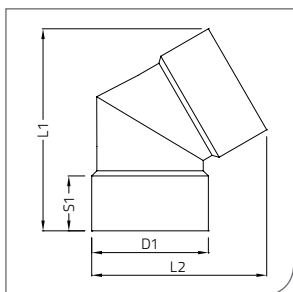
## STORMWATER FITTINGS

### Elbow (Bend)



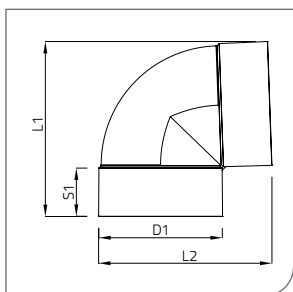
#### 45° Elbow Stormwater SCJ F+F (Bend)

CODE	DESCRIPTION	D1	S1	L1	L2
ELSW15045	150 X 45° S/W ELBOW (Moulded)	DN150	60	166	153
ELSW22545	225 X 45° S/W ELBOW (Moulded)	DN225	100	363	344
ELSW30045	300 X 45° S/W ELBOW (Moulded)	DN300	125	455	420
ELSW37545	375 X 45° S/W ELBOW (Moulded)	DN375	160	594	540



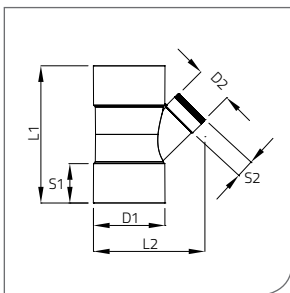
#### 60° Elbow Stormwater SCJ F+F (Bend)

CODE	DESCRIPTION	D1	S1	L1	L2
ELSW15060	150 X 60° S/W ELBOW	DN150	80	295	255
ELSW22560	225 X 60° S/W ELBOW	DN225	125	438	384
ELSW30060	300 X 60° S/W ELBOW	DN300	125	499	453
ELSW37560	375 X 60° S/W ELBOW	DN375	160	658	585



#### 88/90° Elbow Stormwater SCJ F+F (Bend)

CODE	DESCRIPTION	D1	S1	L1	L2
ELSW15090	150 X 88/90° S/W ELBOW (Moulded)	DN150	60	228	228
ELSW22590	225 X 88/90° S/W ELBOW (Moulded)	DN225	100	367	355
ELSW30090	300 X 88/90° S/W ELBOW (Moulded)	DN300	125	462	443
ELSW37590	375 X 88/90° S/W ELBOW (Moulded)	DN375	160	589	583



## STORMWATER FITTINGS

### Junction

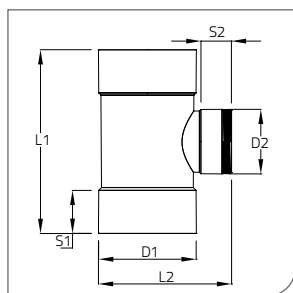
#### 45° Junction Stormwater SCJ F+F

CODE	DESCRIPTION	D1	D2	S1	S2	L1	L2
JNSW150104	150 X 100 X 45° S/W JUNCTION (Moulded)	DN150	DN100	68	50	357	245
JNSW150154	150 X 150 X 45° S/W JUNCTION (Moulded)	DN150	DN150	68	68	357	266
JNSW225104	225 X 100 X 45° S/W JUNCTION (Moulded)	DN225	DN100	110	50	500	397
JNSW225154	225 X 150 X 45° S/W JUNCTION (Moulded)	DN225	DN150	110	76	500	449
JNSW225224	225 X 225 X 45° S/W JUNCTION (Moulded)	DN225	DN225	110	110	620	540
JNSW300104	300 X 100 X 45° S/W JUNCTION (Moulded)	DN300	DN100	175	50	637	465
JNSW300154	300 X 150 X 45° S/W JUNCTION (Moulded)	DN300	DN150	175	76	637	518
JNSW300224	300 X 225 X 45° S/W JUNCTION (Moulded)	DN300	DN225	175	110	802	622
JNSW300304	300 X 300 X 45° S/W JUNCTION (Moulded)	DN300	DN300	175	175	802	683
JNSW375104	375 X 100 X 45° S/W JUNCTION	DN375	DN100	160	55	561	537
JNSW375154	375 X 150 X 45° S/W JUNCTION	DN375	DN150	160	80	595	597
JNSW375224	375 X 225 X 45° S/W JUNCTION	DN375	DN225	160	125	755	712
JNSW375304	375 X 300 X 45° S/W JUNCTION	DN375	DN300	160	125	855	767
JNSW375374	375 X 375 X 45° S/W JUNCTION	DN375	DN375	160	160	965	840



## STORMWATER FITTINGS

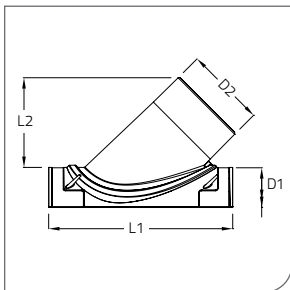
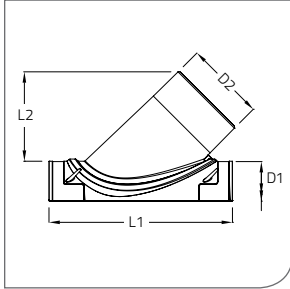
### Junction



#### 90° Junction Stormwater SCJ F+F

CODE	DESCRIPTION	D1	D2	S1	S2	L1	L2
JNSW150109	150 X 100 X 90° S/W JUNCTION (Moulded)	DN150	DN100	68	50	300	259
JNSW150159	150 X 150 X 90° S/W JUNCTION (Moulded)	DN150	DN150	68	68	355	288
JNSW225109	225 X 100 X 90° S/W JUNCTION (Moulded)	DN225	DN100	110	50	500	336
JNSW225159	225 X 150 X 90° S/W JUNCTION (Moulded)	DN225	DN150	110	76	500	362
JNSW225229	225 X 225 X 90° S/W JUNCTION (Moulded)	DN225	DN225	110	110	500	396
JNSW300109	300 X 100 X 90° S/W JUNCTION	DN300	DN100	175	55	410	439
JNSW300159	300 X 150 X 90° S/W JUNCTION	DN300	DN150	175	80	500	475
JNSW300229	300 X 225 X 90° S/W JUNCTION	DN300	DN225	175	125	580	485
JNSW300309	300 X 300 X 90° S/W JUNCTION (Moulded)	DN300	DN300	125	125	680	500
JNSW375109	375 X 100 X 90° S/W JUNCTION	DN375	DN100	160	55	465	475
JNSW375159	375 X 150 X 90° S/W JUNCTION	DN375	DN150	160	80	515	515
JNSW375229	375 X 225 X 90° S/W JUNCTION	DN375	DN225	160	125	635	568
JNSW375309	375 X 300 X 90° S/W JUNCTION	DN375	DN300	160	125	705	577
JNSW375379	375 X 375 X 90° S/W JUNCTION	DN375	DN375	160	160	775	614





## STORMWATER FITTINGS

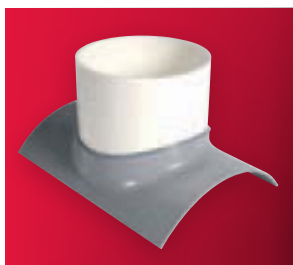
### Boss Connector

#### 45° Boss Connector Stormwater SCJ (Tapping Saddles)

CODE	DESCRIPTION	D1	D2	L1	L2
BCSW100054	100 X 50 X 45° S/W BOSS CONNECTOR	DN100	DN50	170	82
BCSW100104	100 X 100 X 45° S/W BOSS CONNECTOR	DN100	DN100	250	162
BCSW150054	150 X 50 X 45° S/W BOSS CONNECTOR	DN150	DN50	180	92
BCSW150104	150 X 100 X 45° S/W BOSS CONNECTOR (Moulded)	DN150	DN100	257	179
BCSW150154	150 X 150 X 45° S/W BOSS CONNECTOR	DN150	DN150	340	219
BCSW225104	225 X 100 X 45° S/W BOSS CONNECTOR (Moulded)	DN225	DN100	350	158
BCSW225154	225 X 150 X 45° S/W BOSS CONNECTOR (Moulded)	DN225	DN150	350	180
BCSW225224	225 X 225 X 45° S/W BOSS CONNECTOR	DN225	DN225	550	583
BCSW300104	300 X 100 X 45° S/W BOSS CONNECTOR (Moulded)	DN300	DN100	350	158
BCSW300154	300 X 150 X 45° S/W BOSS CONNECTOR (Moulded)	DN300	DN150	350	180
BCSW300224	300 X 225 X 45° S/W BOSS CONNECTOR	DN300	DN225	550	283
BCSW300304	300 X 300 X 45° S/W BOSS CONNECTOR	DN300	DN300	650	357
BCSW375104	375 X 100 X 45° S/W BOSS CONNECTOR (Moulded)	DN375	DN100	350	158
BCSW375154	375 X 150 X 45° S/W BOSS CONNECTOR (Moulded)	DN375	DN150	350	180
BCSW375224	375 X 225 X 45° S/W BOSS CONNECTOR	DN375	DN225	550	318
BCSW375304	375 X 300 X 45° S/W BOSS CONNECTOR	DN375	DN300	650	357
BCSW375374	375 X 375 X 45° S/W BOSS CONNECTOR	DN375	DN375	950	422

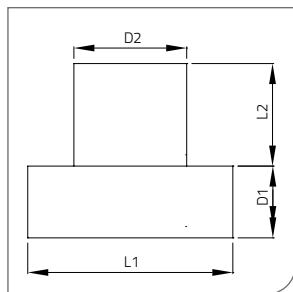
#### 45° Boss Connector Stormwater SCJ (Suits Fibre Reinforced Concrete Pipe)

CODE	DESCRIPTION	D1	D2	L1	L2
BCSW450104	450 X 100 X 45° S/W BOSS CONNECTOR	450	DN100	290	148
BCSW450154	450 X 150 X 45° S/W BOSS CONNECTOR	450	DN150	380	198
BCSW450224	450 X 225 X 45° S/W BOSS CONNECTOR	450	DN225	550	283
BCSW450304	450 X 300 X 45° S/W BOSS CONNECTOR	450	DN300	650	354
BCSW525104	525 X 100 X 45° S/W BOSS CONNECTOR	525	DN100	290	148
BCSW525154	525 X 150 X 45° S/W BOSS CONNECTOR	525	DN150	380	198
BCSW525224	525 X 225 X 45° S/W BOSS CONNECTOR	525	DN225	550	283
BCSW525304	525 X 300 X 45° S/W BOSS CONNECTOR	525	DN300	650	354
BCSW600104	600 X 100 X 45° S/W BOSS CONNECTOR	600	DN100	290	148
BCSW600154	600 X 150 X 45° S/W BOSS CONNECTOR	600	DN150	380	198
BCSW600224	600 X 225 X 45° S/W BOSS CONNECTOR	600	DN225	550	283
BCSW600304	600 X 300 X 45° S/W BOSS CONNECTOR	600	DN300	650	354
BCSW675104	675 X 100 X 45° S/W BOSS CONNECTOR	675	DN100	290	148



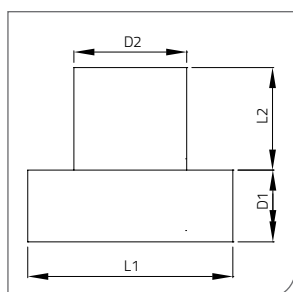
## STORMWATER FITTINGS

### Boss Connector



#### 90° Boss Connector Stormwater SCJ (Tapping Saddles)

CODE	DESCRIPTION	D1	D2	L1	L2
BCSW100059	100 X 50 X 90° S/W BOSS CONNECTOR	DN100	DN50	136	60
BCSW100109	100 X 100 X 90° S/W BOSS CONNECTOR	DN100	DN100	200	100
BCSW150059	150 X 50 X 90° S/W BOSS CONNECTOR	DN150	DN50	136	60
BCSW150109	150 X 100 X 90° S/W BOSS CONNECTOR	DN150	DN100	230	120
BCSW150159	150 X 150 X 90° S/W BOSS CONNECTOR	DN150	DN150	270	120
BCSW225109	225 X 100 X 90° S/W BOSS CONNECTOR	DN225	DN100	235	125
BCSW225159	225 X 150 X 90° S/W BOSS CONNECTOR	DN225	DN150	330	140
BCSW225229	225 X 225 X 90° S/W BOSS CONNECTOR	DN225	DN225	400	160
BCSW300109	300 X 100 X 90° S/W BOSS CONNECTOR	DN300	DN100	280	125
BCSW300159	300 X 150 X 90° S/W BOSS CONNECTOR	DN300	DN150	330	140
BCSW300229	300 X 225 X 90° S/W BOSS CONNECTOR	DN300	DN225	400	150
BCSW300309	300 X 300 X 90° S/W BOSS CONNECTOR	DN300	DN300	515	150
BCSW375109	375 X 100 X 90° S/W BOSS CONNECTOR	DN375	DN100	280	125
BCSW375159	375 X 150 X 90° S/W BOSS CONNECTOR	DN375	DN150	330	140
BCSW375229	375 X 225 X 90° S/W BOSS CONNECTOR	DN375	DN225	400	150
BCSW375309	375 X 300 X 90° S/W BOSS CONNECTOR	DN375	DN300	515	150
BCSW375379	375 X 375 X 90° S/W BOSS CONNECTOR	DN375	DN375	760	200



#### 90° Boss Connector DWV SCJ (Suits Fibre Reinforced Concrete Pipe)

CODE	DESCRIPTION	D1	D2	L1	L2
BCSR450229	450 X 150 X 90° S/W BOSS CONNECTOR	450	DN150	330	140
BCSR450229	450 X 225 X 90° S/W BOSS CONNECTOR	450	DN225	400	150
BCSWSILC	Fullers Silicone White 300gm Caulking Cartridge				

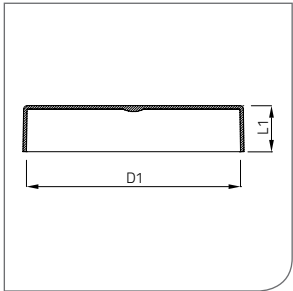
Boss Connectors are supplied standard with a SCJ Spigot branch connection.

SCJ Sockets or RRJ Sockets can be supplied upon request.

Moulded Boss Connectors are supplied with quick strap connectors and a cutting template.

Fabricated Boss Connectors are welded only and supplied with polymer strapping and buckles.

FRC suited Boss Connectors available on request. Please contact Aymroo for non-standard fitting formats and pricing.

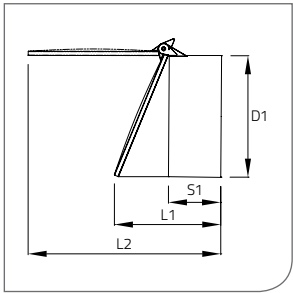


## STORMWATER FITTINGS

### End Cap

#### End Cap SCJ F

CODE	DESCRIPTION	D1	L1
ECSW150	150mm S/W END CAP (Moulded)	DN150	42
ECSW225	225mm S/W END CAP (Moulded)	DN225	54
TCSW225	225mm S/W END CAP THREADED (Moulded)	DN225	54
ECSW300	300mm S/W END CAP (Moulded)	DN300	54
ECSW375	375mm S/W END CAP	DN375	180

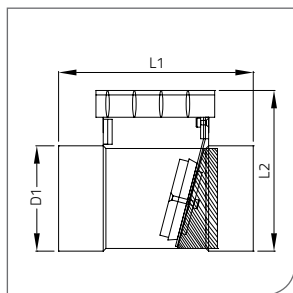


## STORMWATER FITTINGS

### Flap Valve

#### Flap Valve Stormwater SCJ F (Frog Flap)

CODE	DESCRIPTION	D1	S1	L1	L2
FLAP100	100mm FLAP VALVE	DN100	55	190	253
FLAP150	150mm FLAP VALVE (Moulded)	DN150	76	154	275
FLAP225	225mm FLAP VALVE (Moulded)	DN225	110	230	419
FLAP300	300mm FLAP VALVE (Moulded)	DN300	175	326	564
FLAP375	375mm FLAP VALVE	DN375	160	492	702
FLAP150Z	150mm Flap Valve - Mozzie (Moulded)	DN150	76	154	275
FLAP225Z	225mm Flap Valve - Mozzie (Moulded)	DN225	110	230	419
FLAP300Z	300mm Flap Valve - Mozzie (Moulded)	DN300	175	326	564



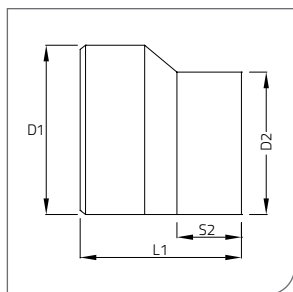
## STORMWATER FITTINGS

### In-line Flap Valve

#### In-line Flap Valve SCJ F+F

CODE	DESCRIPTION	D1	L1	L2
FLAPIL100	100mm IN LINE FLAP VALVE (Moulded Junction)	DN100	218	180
FLAPIL150	150mm IN LINE FLAP VALVE (Moulded Junction)	DN150	250	360

In-line Flap Valves are the ideal device for the prevention of vermin travelling up stormwater pipe systems. For DWV applications use a Watermark approved Aymroo Reflux Valve, refer to page 34.



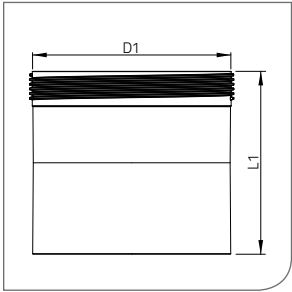
## STORMWATER FITTINGS

### Level Invert Taper

#### Level Invert Taper Stormwater SCJ M+F (Level Invert Reducer)

CODE	DESCRIPTION	D1	D2	S2	L1
LISW150100	150 x 100 S/W LEVEL INVERT TAPER (Moulded)	DN150	DN100	50	233
LISW225100	225 X 100 S/W LEVEL INVERT TAPER (Moulded)	DN225	DN100	50	270
LISW225150	225 X 150 S/W LEVEL INVERT TAPER (Moulded)	DN225	DN150	76	270
LISW300100	300 X 100 S/W LEVEL INVERT TAPER (Moulded)	DN300	DN100	50	350
LISW300150	300 X 150 S/W LEVEL INVERT TAPER (Moulded)	DN300	DN150	76	350
LISW300225	300 X 225 S/W LEVEL INVERT TAPER (Moulded)	DN300	DN225	110	298
LISW375100	375 X 100 S/W LEVEL INVERT TAPER	DN375	DN100	55	284
LISW375150	375 X 150 S/W LEVEL INVERT TAPER	DN375	DN150	80	314
LISW375225	375 X 225 S/W LEVEL INVERT TAPER	DN375	DN225	125	358
LISW375300	375 X 300 S/W LEVEL INVERT TAPER	DN375	DN300	125	389

Level Invert Tapers are supplied standard with major diameter SCJ Spigots and minor diameter SCJ Sockets. Please contact Aymroo for non-standard fitting formats and pricing.

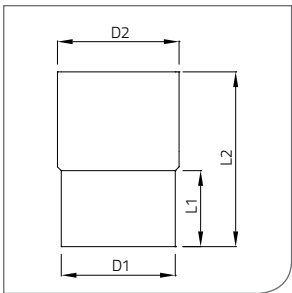


## STORMWATER FITTINGS

### Straight Coupling

#### Straight Coupling Stormwater SCJ F+F

CODE	DESCRIPTION	D1	L1
CPSW100	100mm S/W COUPLING	DN100	150
CPSW150	150mm S/W COUPLING THREADED (Moulded)	DN150	156
CPSW225	225mm S/W COUPLING THREADED (Moulded)	DN225	226
CPSW300	300mm S/W COUPLING (Moulded)	DN300	358
CPSW375	375mm S/W COUPLING	DN375	335



## STORMWATER FITTINGS

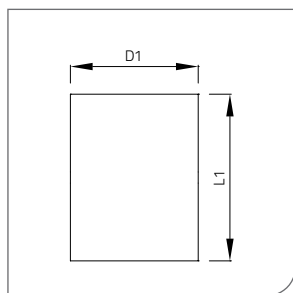
### Slab Repair Coupling

#### Slab Repair Coupling Stormwater SCJ

CODE	DESCRIPTION	D1	D2	L1	L2
SRCSW040	40mm S/W SLAB REPAIR COUPLING	40	43	100	230
SRCSW050	50mm S/W SLAB REPAIR COUPLING	50	55	100	230
SRCSW065	65mm S/W SLAB REPAIR COUPLING	63	69	100	230
SRCSW080	80mm S/W SLAB REPAIR COUPLING	75	82	100	230
SRCSW090	90mm S/W SLAB REPAIR COUPLING	86	94	100	230
SRCSW100	100mm S/W SLAB REPAIR COUPLING	102	111	100	230
SRCSW150	150mm S/W SLAB REPAIR COUPLING	155	160	100	230
SRCSW225	225mm S/W SLAB REPAIR COUPLING	242	250	150	330
SRCSW300	300mm S/W SLAB REPAIR COUPLING	305	315	150	330
SRCSW375	375mm S/W SLAB REPAIR COUPLING	383	400	150	330

Slab repair couplings are supplied standard with a SCJ internal spigot at one end and a SCJ spigot at the other end. Slab repair couplings can be supplied socketed upon request. Please contact Aymroo for non-standard fitting formats and pricing.



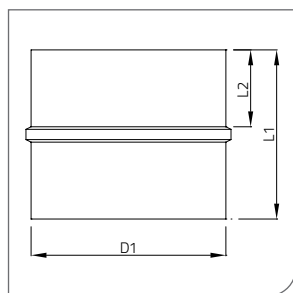


## STORMWATER FITTINGS

### Slip Coupling

#### Slip Coupling Stormwater SCJ F+F (Repair Coupling)

CODE	DESCRIPTION	D1	L1
SLCPSW100	100mm S/W SLIP COUPLING	DN100	150
SLCPSW150	150mm S/W SLIP COUPLING	DN150	250
SLCPSW225	225mm S/W SLIP COUPLING	DN225	270
SLCPSW300	300mm S/W SLIP COUPLING	DN300	290
SLCPSW375	375mm S/W SLIP COUPLING	DN375	290



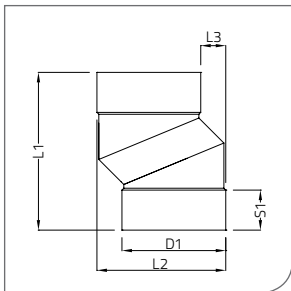
## STORMWATER FITTINGS

### Internal Coupling

#### Internal Coupling Stormwater SCJ M+M

CODE	DESCRIPTION	D1	L1	L2
ICSW100	100mm INTERNAL COUPLING	102	210	100
ICSW150	150mm INTERNAL COUPLING	150	210	100
ICSW225	225mm INTERNAL COUPLING	240	330	150
ICSW300	300mm INTERNAL COUPLING	305	330	150
ICSW375	375mm INTERNAL COUPLING	380	330	150

Internal Couplings for Stormwater applications only are supplied standard with internal spigots at each end.



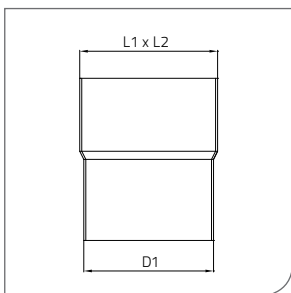
## STORMWATER FITTINGS

### Offsets

#### Offsets Stormwater SCJ F+F

CODE	DESCRIPTION	D1	S1	L1	L2	L3
OFFSW225	225mm S/W OFFSETS	DN225	125	498	364	100
OFFSW300	300mm S/W OFFSETS	DN300	125	523	428	100
OFFSW375	375mm S/W OFFSETS	DN375	160	631	515	100

Offsets are supplied standard with a 45° angle and 100mm offset of socket centres. Offsets with alternative lengths and traverse or other special angles are available on request. Please contact Aymroo to specify your Offset requirements and confirm pricing.



## STORMWATER FITTINGS

### Downpipe Adaptor

#### Downpipe Adaptor SCJ

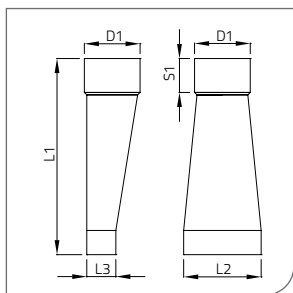
CODE	DESCRIPTION	D1	L1	L2
DPSW10042	4" X 2" X 100mm DOWNPIPE ADAPTOR	DN100	4"	2"
DPSW10043	4" X 3" X 100mm DOWNPIPE ADAPTOR	DN100	4"	3"
DPSW10044	4" X 4" X 100mm DOWNPIPE ADAPTOR	DN100	4"	4"
DPSW10064	6" X 4" X 100mm DOWNPIPE ADAPTOR	DN100	6"	4"
DPSW15064	6" X 4" X 150mm DOWNPIPE ADAPTOR	DN150	6"	4"
DPSW15066	6" X 6" X 150mm DOWNPIPE ADAPTOR	DN150	6"	6"
DPSW15084	8" X 4" X 150mm DOWNPIPE ADAPTOR	DN150	8"	4"
DPSW22588	8" X 8" X 225mm DOWNPIPE ADAPTOR	DN225	8"	8"

Downpipe Adaptors can be manufactured to a complete range of non-standard sizes and formats including SCJ and RRJ Sockets, Spigots, Internal Spigots. Please contact Aymroo to specify your Downpipe Adaptor requirements and confirm pricing.



## STORMWATER FITTINGS

### Kerb Adaptor



#### Kerb Adaptor SCJ F

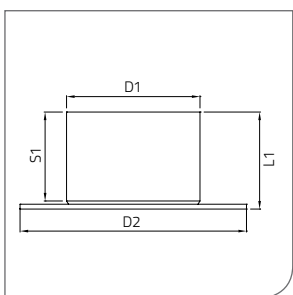
CODE	DESCRIPTION	D1	S1	L1	L2	L3
KERB15050100	150 X 50 X 100mm KERB ADAPTOR	DN100	55	405	150	50
KERB200100100	200 X 100 X 100mm KERB ADAPTOR	DN100	55	400	200	150
KERB150100150	150 X 100 X 150mm KERB ADAPTOR	DN150	80	450	150	100
KERB200100150	200 X 100 X 150mm KERB ADAPTOR	DN150	80	500	200	100

Kerb Adaptors supplied standard with a SCJ Socket. Special size kerb adaptors can be supplied upon request. Please contact Aymroo for non-standard fitting formats and pricing.



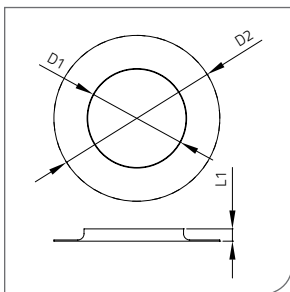
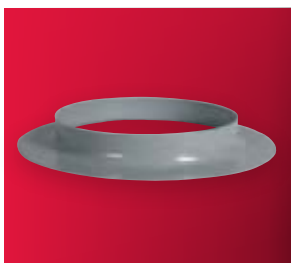
## STORMWATER FITTINGS

### Flanges



#### Flanges (Undrilled)

CODE	DESCRIPTION	D1	D2	S1	L1
FLANSW100	100mm S/W FLANGE	DN100	215	55	68
FLANSW150	150mm S/W FLANGE	DN150	280	80	94
FLANSW225	225mm S/W FLANGE	DN225	405	125	147
FLANSW300	300mm S/W FLANGE	DN300	455	125	198
FLANSW375	375mm S/W FLANGE	DN375	580	160	223

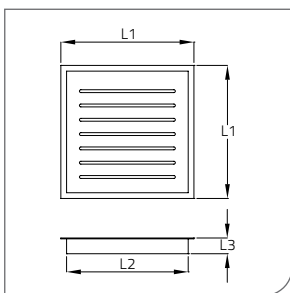
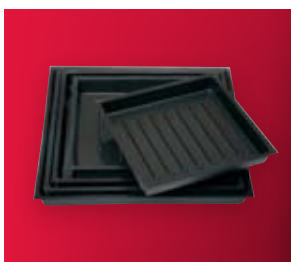


## STORMWATER FITTINGS

### Safe Waste Tray

#### Safe Waste Tray SCJ

CODE	DESCRIPTION	D1	D2	L1
SWT150	150mm SAFE WASTE TRAY	162	270	20
SWT225	225mm SAFE WASTE TRAY	250	365	20
SWT300	300mm SAFE WASTE TRAY	315	425	20



## STORMWATER FITTINGS

### Safe Tray

#### Safe Tray (Hot Water Cylinder Safe Tray)

CODE	DESCRIPTION	L1	L2	L3
SAFE425425	425 X 425 SAFE TRAY (Moulded)	465	425	55
SAFE450450	450 X 450 SAFE TRAY (Moulded)	490	450	55
SAFE550550	550 X 550 SAFE TRAY (Moulded)	590	550	55
SAFE600600	600 X 600 SAFE TRAY (Moulded)	640	600	55
SAFE650650	650 X 650 SAFE TRAY (Moulded)	690	650	55

ABS Hot Water Cylinder Safe Trays eliminate electrolysis and will never rust or corrode. The ribbed base creates better air circulation. All trays 55mm deep standard size, unless specified. 40mm or 50mm tray outlet nozzle supplied to suit PVC DWV fittings and pipes on site. Melbourne Water, Authorisation Index 390/201/1666. Special sizes available on request, please provide a drawing of your requirements. Please contact Aymroo for non-standard fitting formats and pricing.



## STORMWATER FITTINGS

### Pipe Slotting

#### Pipe Slotting

CODE	DESCRIPTION
SLOT90	90mm PIPE SLOTTING
SLOT100	100mm PIPE SLOTTING
SLOT150	150mm PIPE SLOTTING
SLOT225	225mm PIPE SLOTTING
SLOT300	300mm PIPE SLOTTING
SLOT375	375mm PIPE SLOTTING

Aymroo can convert customer supplied pipe to a slotted format for drainage or infiltration applications. Aymroo can cater for pipe from Ø90mm up to Ø375mm in uPVC, HDPE, LDPE, ABS. Slots can be either 3 or 4 per diameter. Slots are 150mm long x 5mm wide with 300mm centres. Please contact Aymroo for non-standard fitting formats and pricing.





# DWV SEWER FITTINGS



**A**ymroo supplies an extensive range of both moulded and fabricated DWV fittings to suit all your specialised large diameter PVC plumbing needs.

Aymroo's Australian made large diameter moulded DWV fittings are moulded in state-of-the-art injection moulding machines in the latest best environmental practice BEP-uPVC technology resins, to the requirements of AS/NZS1260.

Moulded DWV fittings are manufactured to SN6 AS/NZS1260 for use on SN4 up to SN16 pipe in Cloud Grey. Fabricated DWV fittings are manufactured to AS/NZS1260, triple welded for strength and fibreglassed from socket to socket for strength and durability.

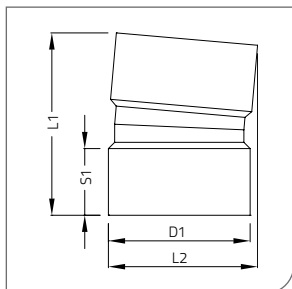
A top gelcoat layer is added to encase the fibreglass for strength, a smooth finish and safer handling. Solvent Cement Joint Female Sockets (SCJ F+F) are the standard fitting format unless specified. Fittings can be supplied with male end spigots for M+F and M+M formats upon request. Rubber Ring Joint (RRJ) fittings are also available on request. Inspection Openings can be supplied to most fittings right hand, left hand or rear access.

Dimensions nominal in mm unless specified. In the interests of constant product improvement, Aymroo reserves the right to vary specifications without notice. Please contact Aymroo for non-standard fitting formats and pricing.



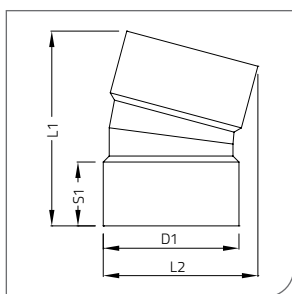
## DWV SEWER FITTINGS

### Bend (Elbow)



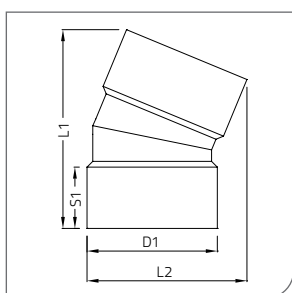
#### 5° Bend DWV Sewer SCJ F+F (Elbow)

CODE	DESCRIPTION	D1	S1	L1	L2
BDSR15005	150 X 5° DWV BEND	DN150	80	219	179
BDSR22505	225 X 5° DWV BEND	DN225	125	316	277
BDSR30005	300 X 5° DWV BEND	DN300	175	277	347
BDSR37505	375 X 5° DWV BEND	DN375	200	494	449



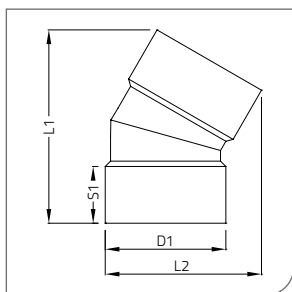
#### 15° Bend DWV Sewer SCJ F+F (Elbow)

CODE	DESCRIPTION	D1	S1	L1	L2
BDSR15015	150 X 15° DWV BEND	DN150	80	244	194
BDSR22515	225 X 15° DWV BEND (Moulded)	DN225	110	307	296
BDSR30015	300 X 15° DWV BEND	DN300	175	473	382
BDSR37515	375 X 15° DWV BEND	DN375	200	557	488



#### 22° Bend DWV Sewer SCJ F+F (Elbow)

CODE	DESCRIPTION	D1	S1	L1	L2
BDSR15022	150 X 22° DWV BEND	DN150	80	260	209
BDSR22522	225 X 22° DWV BEND	DN225	125	382	320
BDSR30022	300 X 22° DWV BEND	DN300	175	505	406
BDSR37522	375 X 22° DWV BEND	DN375	200	598	515



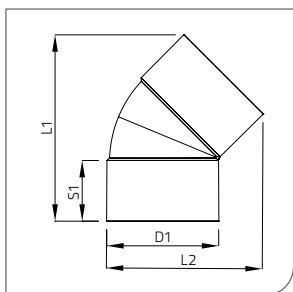
#### 30° Bend DWV Sewer SCJ F+F (Elbow)

CODE	DESCRIPTION	D1	S1	L1	L2
BDSR15030	150 X 30° DWV BEND	DN150	80	273	220
BDSR22530	225 X 30° DWV BEND	DN225	125	404	337
BDSR30030	300 X 30° DWV BEND	DN300	175	531	429
BDSR37530	375 X 30° DWV BEND	DN375	200	634	541



## DWV SEWER FITTINGS

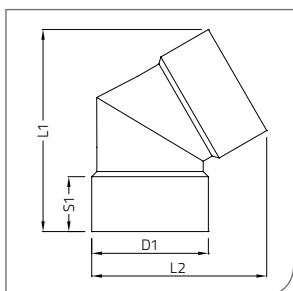
### Bend (Elbow)



#### 45° Bend DWV Sewer SCJ F+F (Elbow)

CODE	DESCRIPTION	D1	S1	L1	L2
BDSR15045	150 X 45° DWV BEND (Moulded)	DN150	76	232	180
BDSR22545	225 X 45° DWV BEND (Moulded)	DN225	110	435	370
BDSR30045	300 X 45° DWV BEND (Moulded)	DN300	175	533	464
BDSR37545	375 X 45° DWV BEND	DN375	200	686	588

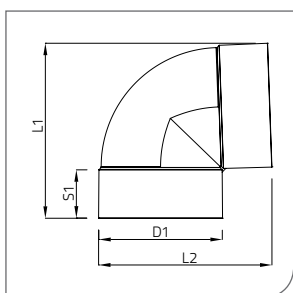
Refer to Lobster Bend DWV for other sizes.



#### 60° Bend DWV Sewer SCJ F+F (Elbow)

CODE	DESCRIPTION	D1	S1	L1	L2
BDSR15060	150 X 60° DWV BEND	DN150	80	295	255
BDSR22560	225 X 60° DWV BEND	DN225	125	443	389
BDSR30060	300 X 60° DWV BEND	DN300	175	576	497

Refer to Lobster Bend DWV for other sizes.



#### 88/90° Bend DWV Sewer SCJ F+F (Elbow)

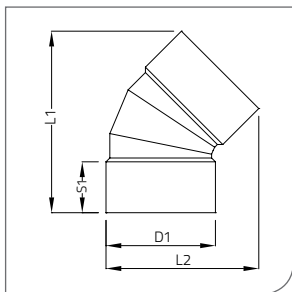
CODE	DESCRIPTION	D1	S1	L1	L2
BDSR15090	150 X 90° DWV BEND (Moulded)	DN150	76	283	283
BDSR22590	225 X 88/90° DWV BEND (Moulded)	DN225	110	430	424
BDSR30090	300 X 88/90° DWV BEND (Moulded)	DN300	175	564	555

Refer to Lobster Bend DWV for other sizes.



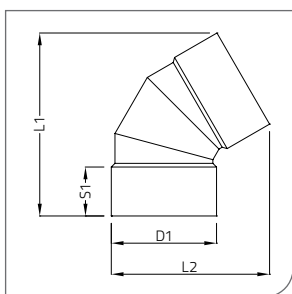
## DWV SEWER FITTINGS

### Lobster Bend



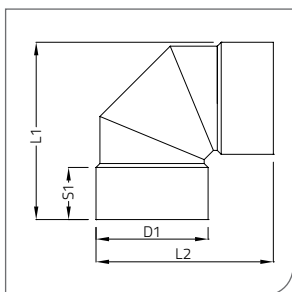
#### 45° Lobster Bend DWV Sewer SCJ F+F

CODE	DESCRIPTION	D1	S1	L1	L2
LBSR37545	375 X 45° DWV LOBSTER BEND	DN375	200	714	600



#### 60° Lobster Bend DWV Sewer SCJ F+F

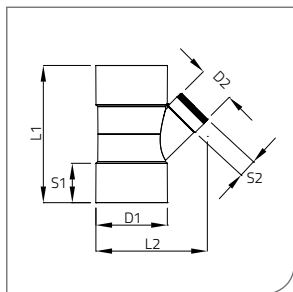
CODE	DESCRIPTION	D1	S1	L1	L2
LBSR15060	150 X 60° DWV LOBSTER BEND	DN150	80	307	263
LBSR22560	225 X 60° DWV LOBSTER BEND	DN225	125	468	408
LBSR30060	300 X 60° DWV LOBSTER BEND	DN300	175	600	514
LBSR37560	375 X 60° DWV LOBSTER BEND	DN375	200	748	647



#### 90° Lobster Bend DWV Sewer SCJ F+F

CODE	DESCRIPTION	D1	S1	L1	L2
LBSR37590	375 X 90° DWV LOBSTER BEND	DN375	200	680	680



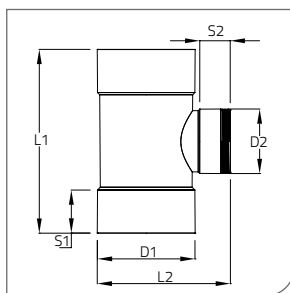


## DWV SEWER FITTINGS

### Junction

#### 45° Junction DWV Sewer SCJ F+F

CODE	DESCRIPTION	D1	D2	S1	S2	L1	L2
JNSR150104	150 X 100 X 45° DWV JUNCTION (Moulded)	DN150	DN100	76	50	328	245
JNSR150154	150 X 150 X 45° DWV JUNCTION (Moulded)	DN150	DN150	76	76	412	277
JNSR225104	225 X 100 X 45° DWV JUNCTION (Moulded)	DN225	DN100	110	50	500	397
JNSR225154	225 X 150 X 45° DWV JUNCTION (Moulded)	DN225	DN150	110	76	500	449
JNSR225224	225 X 225 X 45° DWV JUNCTION (Moulded)	DN225	DN225	110	110	620	540
JNSR300104	300 X 100 X 45° DWV JUNCTION (Moulded)	DN300	DN100	175	50	637	465
JNSR300154	300 X 150 X 45° DWV JUNCTION (Moulded)	DN300	DN150	175	76	637	518
JNSR300224	300 X 225 X 45° DWV JUNCTION (Moulded)	DN300	DN225	175	110	802	622
JNSR300304	300 X 300 X 45° DWV JUNCTION (Moulded)	DN300	DN300	175	175	802	683
JNSR375104	375 X 100 X 45° DWV JUNCTION	DN375	DN100	200	55	656	545
JNSR375154	375 X 150 X 45° DWV JUNCTION	DN375	DN150	200	80	690	611
JNSR375224	375 X 225 X 45° DWV JUNCTION	DN375	DN225	200	125	850	722
JNSR375304	375 X 300 X 45° DWV JUNCTION	DN375	DN300	200	175	950	811
JNSR375374	375 X 375 X 45° DWV JUNCTION	DN375	DN375	200	200	1056	887



## DWV SEWER FITTINGS

### Junction

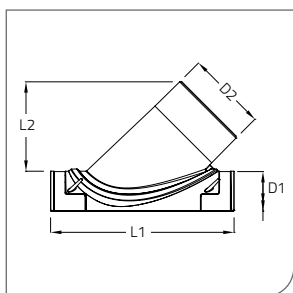
#### 90° Junction DWV Sewer SCJ F+F

CODE	DESCRIPTION	D1	D2	S1	S2	L1	L2
JNSR150109	150 X 100 X 90° DWV JUNCTION (Moulded)	DN150	DN100	76	50	300	260
JNSR150159	150 X 150 X 90° DWV JUNCTION (Moulded)	DN150	DN150	76	76	355	288
JNSR225109	225 X 100 X 90° DWV JUNCTION (Moulded)	DN225	DN100	110	50	500	336
JNSR225159	225 X 150 X 90° DWV JUNCTION (Moulded)	DN225	DN150	110	76	500	362
JNSR225229	225 X 225 X 90° DWV JUNCTION (Moulded)	DN225	DN225	110	110	500	396
JNSR300109	300 X 100 X 90° DWV JUNCTION	DN300	DN100	175	55	495	390
JNSR300159	300 X 150 X 90° DWV JUNCTION	DN300	DN150	175	80	575	440
JNSR300229	300 X 225 X 90° DWV JUNCTION	DN300	DN225	175	125	665	485
JNSR300309	300 X 300 X 90° DWV JUNCTION	DN300	DN300	175	175	735	542
JNSR375109	375 X 100 X 90° DWV JUNCTION	DN375	DN100	200	55	560	483
JNSR375159	375 X 150 X 90° DWV JUNCTION	DN375	DN150	200	80	610	523
JNSR375229	375 X 225 X 90° DWV JUNCTION	DN375	DN225	200	125	730	577
JNSR375309	375 X 300 X 90° DWV JUNCTION	DN375	DN300	200	175	800	635
JNSR375379	375 X 375 X 90° DWV JUNCTION	DN375	DN375	200	200	870	669



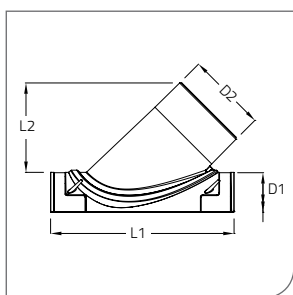
## DWV SEWER FITTINGS

### Boss Connector



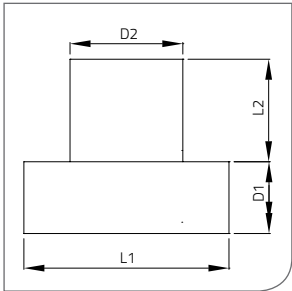
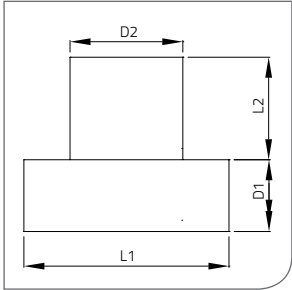
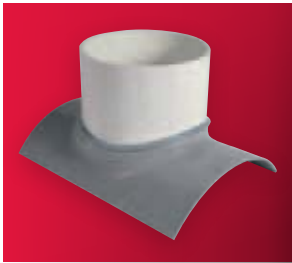
#### 45° Boss Connector DWV Sewer SCJ (Tapping Saddles)

CODE	DESCRIPTION	D1	D2	L1	L2
BCSR100054	100 X 50 X 45° DWV BOSS CONNECTOR	DN100	DN50	170	82
BCSR100104	100 X 100 X 45° DWV BOSS CONNECTOR	DN100	DN100	250	162
BCSR150054	150 X 50 X 45° DWV BOSS CONNECTOR	DN150	DN50	180	92
BCSR150104	150 X 100 X 45° DWV BOSS CONNECTOR (Moulded)	DN150	DN100	257	179
BCSR150154	150 X 150 X 45° DWV BOSS CONNECTOR	DN150	DN150	340	219
BCSR225104	225 X 100 X 45° DWV BOSS CONNECTOR (Moulded)	DN225	DN100	350	158
BCSR225154	225 X 150 X 45° DWV BOSS CONNECTOR (Moulded)	DN225	DN150	350	180
BCSR225224	225 X 225 X 45° DWV BOSS CONNECTOR	DN225	DN225	550	283
BCSR300104	300 X 100 X 45° DWV BOSS CONNECTOR (Moulded)	DN300	DN100	350	158
BCSR300154	300 X 150 X 45° DWV BOSS CONNECTOR (Moulded)	DN300	DN150	350	180
BCSR300224	300 X 225 X 45° DWV BOSS CONNECTOR	DN300	DN225	550	283
BCSR300304	300 X 300 X 45° DWV BOSS CONNECTOR	DN300	DN300	650	357
BCSR375104	375 X 100 X 45° DWV BOSS CONNECTOR (Moulded)	DN375	DN100	350	158
BCSR375154	375 X 150 X 45° DWV BOSS CONNECTOR (Moulded)	DN375	DN150	350	180
BCSR375224	375 X 225 X 45° DWV BOSS CONNECTOR	DN375	DN225	550	318
BCSR375304	375 X 300 X 45° DWV BOSS CONNECTOR	DN375	DN300	650	354
BCSR375374	375 X 375 X 45° DWV BOSS CONNECTOR	DN375	DN375	950	422



#### 45° Boss Connector DWV SCJ (Suits Fibre Reinforced Concrete Pipe)

CODE	DESCRIPTION	D1	D2	L1	L2
BCSR450104	450 X 100 X 45° DWV BOSS CONNECTOR	450	DN100	290	148
BCSR450154	450 X 150 X 45° DWV BOSS CONNECTOR	450	DN150	380	198
BCSR450224	450 X 225 X 45° DWV BOSS CONNECTOR	450	DN225	550	283
BCSR450304	450 X 300 X 45° DWV BOSS CONNECTOR	450	DN300	650	354
BCSR525104	525 X 100 X 45° DWV BOSS CONNECTOR	525	DN100	290	148
BCSR525154	525 X 150 X 45° DWV BOSS CONNECTOR	525	DN150	380	198
BCSR525224	525 X 225 X 45° DWV BOSS CONNECTOR	525	DN225	550	283
BCSR525304	525 X 300 X 45° DWV BOSS CONNECTOR	525	DN300	650	354
BCSR600104	600 X 100 X 45° DWV BOSS CONNECTOR	600	DN100	290	148
BCSR600154	600 X 150 X 45° DWV BOSS CONNECTOR	600	DN150	380	198
BCSR600224	600 X 225 X 45° DWV BOSS CONNECTOR	600	DN225	550	283
BCSR600304	600 X 300 X 45° DWV BOSS CONNECTOR	600	DN300	650	354
BCSR675104	675 X 100 X 45° DWV BOSS CONNECTOR	675	DN100	290	148



# DWV SEWER FITTINGS

## Boss Connector

### 90° Boss Connector DWV Sewer SCJ (Tapping Saddles)

CODE	DESCRIPTION	D1	D2	L1	L2
BCSR100059	100 X 50 X 90° DWV BOSS CONNECTOR	DN100	DN50	136	60
BCSR100109	100 X 100 X 90° DWV BOSS CONNECTOR	DN100	DN100	200	100
BCSR150059	150 X 50 X 90° DWV BOSS CONNECTOR	DN150	DN50	136	60
BCSR150109	150 X 100 X 90° DWV BOSS CONNECTOR	DN150	DN100	230	120
BCSR150159	150 X 150 X 90° DWV BOSS CONNECTOR	DN150	DN150	270	120
BCSR225109	225 X 100 X 90° DWV BOSS CONNECTOR	DN225	DN100	235	125
BCSR225159	225 X 150 X 90° DWV BOSS CONNECTOR	DN225	DN150	330	140
BCSR225229	225 X 225 X 90° DWV BOSS CONNECTOR	DN225	DN225	400	160
BCSR300109	300 X 100 X 90° DWV BOSS CONNECTOR	DN300	DN100	280	125
BCSR300159	300 X 150 X 90° DWV BOSS CONNECTOR	DN300	DN150	330	140
BCSR300229	300 X 225 X 90° DWV BOSS CONNECTOR	DN300	DN225	400	150
BCSR300309	300 X 300 X 90° DWV BOSS CONNECTOR	DN300	DN300	515	150
BCSR375109	375 X 100 X 90° DWV BOSS CONNECTOR	DN375	DN100	280	125
BCSR375159	375 X 150 X 90° DWV BOSS CONNECTOR	DN375	DN150	330	140
BCSR375229	375 X 225 X 90° DWV BOSS CONNECTOR	DN375	DN225	400	150
BCSR375309	375 X 300 X 90° DWV BOSS CONNECTOR	DN375	DN300	515	150
BCSR375379	375 X 375 X 90° DWV BOSS CONNECTOR	DN375	DN375	760	200

### 90° Boss Connector DWV SCJ (Suits Fibre Reinforced Concrete Pipe)

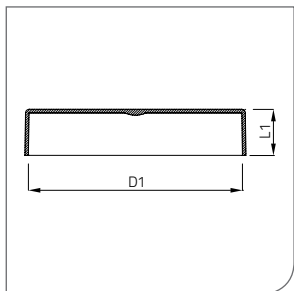
CODE	DESCRIPTION	D1	D2	L1	L2
BCSR450229	450 X 150 X 90° DWV BOSS CONNECTOR	450	DN150	330	140
BCSR450229	450 X 225 X 90° DWV BOSS CONNECTOR	450	DN225	400	150
BCSWSILC	Fullers Silicone White 300gm Caulking Cartridge				

Boss Connectors are supplied standard with a SCJ Spigot branch connection.  
SCJ Sockets or RRJ Sockets can be supplied upon request.  
Moulded Boss Connectors are supplied with quick strap connectors and a cutting template.  
Fabricated Boss Connectors are welded only and supplied with polymer strapping and buckles.  
FRC suited Boss Connectors available on request. Please contact Aymroo for non-standard fitting formats and pricing.



## DWV SEWER FITTINGS

### End Cap



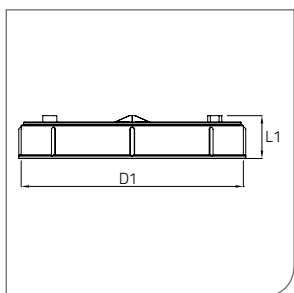
#### End Cap DWV Sewer SCJ F

CODE	DESCRIPTION	D1	L1
ECSR150	150mm DWV END CAP (Moulded)	DN150	42
ECSR225	225mm DWV END CAP (Moulded)	DN225	54
ECSR300	300mm DWV END CAP (Moulded)	DN300	54
ECSR375	375mm DWV END CAP	DN375	180



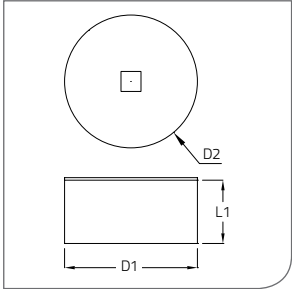
## DWV SEWER FITTINGS

### Threaded End Cap



#### Threaded End Cap DWV Sewer

CODE	DESCRIPTION	D1	L1
TCSR100	100mm DWV THREADED END CAP (Moulded)	DN100	35
TCSR150	150mm DWV THREADED END CAP (Moulded)	DN150	38
TCSR225	225mm DWV THREADED END CAP (Moulded)	DN225	54

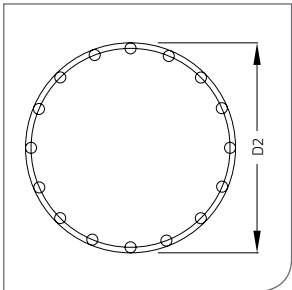
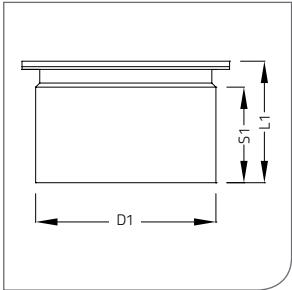


## DWV SEWER FITTINGS

### Access Cap

#### Access Cap DWV Sewer SCJ F (Locking and Threaded)

CODE	DESCRIPTION	D1	D2	L1
MSACL25000	225mm ACCESS CAP (Locking Trap Screw) (Moulded)	DN225	262	125
MSACL30000	300mm ACCESS CAP (Locking Trap Screw) (Moulded)	DN300	330	111
CTSR225	225mm DWV TRAP SCREW WITH 225 THREADED CAP (Moulded)	DN225	291	239
MSACSPAN	225mm ACCESS CAP SPANNER			



## DWV SEWER FITTINGS

### Bolted Trap Screw

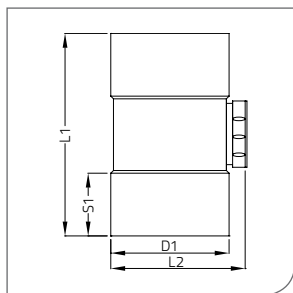
#### Bolted Trap Screw DWV Sewer SCJ F

CODE	DESCRIPTION	D1	D2	S1	L1
BTSR150	150mm DWV BOLTED TRAP SCREW	DN150	208	80	113
BTSR225	225mm DWV BOLTED TRAP SCREW	DN225	310	125	162
BTSR300	300mm DWV BOLTED TRAP SCREW	DN300	380	175	223
BTSR375	375mm DWV BOLTED TRAP SCREW	DN375	450	200	245



## DWV SEWER FITTINGS

### Inspection Opening



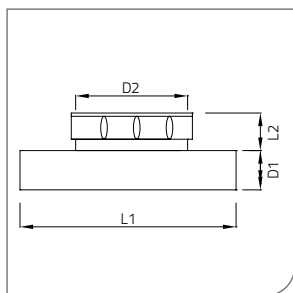
#### 90° Inspection Opening DWV Sewer SCJ F+F

CODE	DESCRIPTION	D1	D2	S1	L1	L2
IBSR225100	225 X 100 DWV INSPECTION OPENING (TAC) (Moulded)	DN225	DN100	110	500	346
IBSR225150	225 X 150 DWV INSPECTION OPENING (TAC) (Moulded)	DN225	DN150	110	500	375
IBSR225225	225 X 225 DWV INSPECTION OPENING (TAC) (Moulded)	DN225	DN225	110	500	416
IBSR300150	300 X 150 DWV INSPECTION OPENING (TAC)	DN300	DN150	175	565	375
IBSR300225	300 X 225 DWV INSPECTION OPENING (TAC)	DN300	DN225	175	665	450
IBSR375150	375 X 150 DWV INSPECTION OPENING (TAC)	DN375	DN150	200	628	472
IBSR375225	375 X 225 DWV INSPECTION OPENING (TAC)	DN375	DN225	200	730	539

TAC - Threaded Access Cap Fitted Standard (100mm, 150mm, 225mm)

LTS - Locking Trap Screw can be fitted upon request (225mm, 300mm)

Inspection Openings are also referred to as Test Openings, Inspection Tee, Access Fitting, IO Junction. Inspection Openings can also be supplied to all Bends, Junctions, Right Hand, Left Hand or Rear Access. Please contact Aymroo for non-standard fitting formats and pricing.



#### 90° Clamp On Inspection Opening DWV Sewer SCJ (Boss Connector IO)

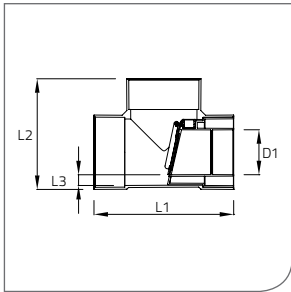
CODE	DESCRIPTION	D1	D2	L1	L2
IOSR150100	150 X 100 BOSS CONNECTOR INSPECTION OPENING	DN150	DN100	230	47
IOSR225100	225 X 100 BOSS CONNECTOR INSPECTION OPENING	DN225	DN100	240	47
IOSR225150	225 X 150 BOSS CONNECTOR INSPECTION OPENING	DN225	DN150	330	57
IOSR225225	225 X 225 BOSS CONNECTOR INSPECTION OPENING	DN225	DN225	400	124
IOSR300100	300 X 100 BOSS CONNECTOR INSPECTION OPENING	DN300	DN100	280	47
IOSR300150	300 X 150 BOSS CONNECTOR INSPECTION OPENING	DN300	DN150	330	57
IOSR300225	300 X 225 BOSS CONNECTOR INSPECTION OPENING	DN300	DN225	400	124
IOSR300300	300 X 300 BOSS CONNECTOR INSPECTION OPENING (LTS)	DN300	DN300	515	130
IOSR375100	375 X 100 BOSS CONNECTOR INSPECTION OPENING	DN375	DN100	280	47
IOSR375150	375 X 150 BOSS CONNECTOR INSPECTION OPENING	DN375	DN150	330	57
IOSR375225	375 X 225 BOSS CONNECTOR INSPECTION OPENING	DN375	DN225	400	124
IOSR375300	375 X 300 BOSS CONNECTOR INSPECTION OPENING (LTS)	DN375	DN300	515	130

Clamp On Inspection Openings are supplied standard with a Threaded Cap, unless specified.

Locking Trap Screw (LTS 225mm, 300mm) available upon request. Fabricated Clamp On

Inspection Openings are welded only and supplied with polymer strapping and buckles.

FRC suitable Clamp On Inspection Openings are available on request. Please contact Aymroo for non-standard fitting formats and pricing.



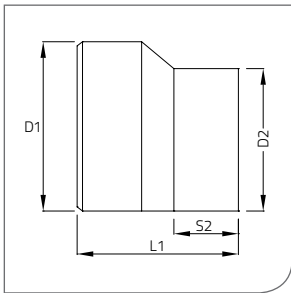
## DWV SEWER FITTINGS

### Reflux Valve

#### Reflux Valve DWV Sewer SCJ F+F

CODE	DESCRIPTION	D1	L1	L2	L3
REFLUX150	150mm REFLUX VALVE (Moulded)	DN150	660	396	40
REFLUX225	225mm REFLUX VALVE	DN225	800	520	40
REFLUX300	300mm REFLUX VALVE	DN300	800	550	40
REFSEAL150	150mm REFLUX PLATE and SEAL (Moulded)				
REFHINGE150	150mm REFLUX HINGE PLUG (Moulded)				

Aymroo PVC Reflux Valves are available standard with solvent cement joint sockets and are also available in rubber ring joint sockets upon request. Available in sizes from 150mm up to 300mm. Aymroo Reflux Valves are designed with built-in free flowing grade, with minimum drop and no restrictive pooling inverts. Aymroo Reflux Valves free flowing grade prevents debris jamming and sticking valves that can occur in other types of Reflux Valves. 150mm Aymroo Reflux Valve supplied with 225x150 LIT outlet fitted. 150mm Aymroo Reflux Valves can be buried direct. 225mm and 300mm Aymroo Reflux Valves are required to be installed in a pit. Please contact Aymroo for non-standard fitting formats and pricing.



## DWV SEWER FITTINGS

### Level Invert Taper

#### Level Invert Taper DWV Sewer SCJ M+F (Level Invert Reducer)

CODE	DESCRIPTION	D1	D2	S2	L1
LISR150100	150 X 100 DWV LEVEL INVERT TAPER (Moulded)	DN150	DN100	50	233
LISR225100	225 X 100 DWV LEVEL INVERT TAPER (Moulded)	DN225	DN100	50	270
LISR225150	225 X 150 DWV LEVEL INVERT TAPER (Moulded)	DN225	DN150	76	270
LISR300100	300 X 100 DWV LEVEL INVERT TAPER (Moulded)	DN300	DN100	50	350
LISR300150	300 X 150 DWV LEVEL INVERT TAPER (Moulded)	DN300	DN150	76	350
LISR300225	300 X 225 DWV LEVEL INVERT TAPER (Moulded)	DN300	DN225	110	298
LISR375100	375 X 100 DWV LEVEL INVERT TAPER	DN375	DN100	55	284
LISR375150	375 X 150 DWV LEVEL INVERT TAPER	DN375	DN150	80	314
LISR375225	375 X 225 DWV LEVEL INVERT TAPER	DN375	DN225	125	358
LISR375300	375 X 300 DWV LEVEL INVERT TAPER	DN375	DN300	175	389

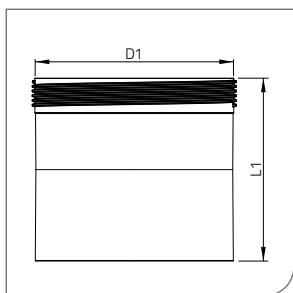
Level Invert Tapers are supplied standard with major diameter SCJ Spigots and minor diameter SCJ Sockets. Please contact Aymroo for non-standard fitting formats and pricing.





## DWV SEWER FITTINGS

### Straight Coupling



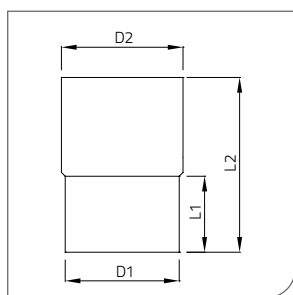
#### Straight Coupling DWV Sewer SCJ F+F

CODE	DESCRIPTION	D1	L1
CPSR150	150mm DWV COUPLING THREADED (Moulded)	DN150	156
CPSR225	225mm DWV COUPLING THREADED (Moulded)	DN225	226
CPSR300	300mm DWV COUPLING (Moulded)	DN300	358
CPSR375	375mm DWV COUPLING	DN375	430



## DWV SEWER FITTINGS

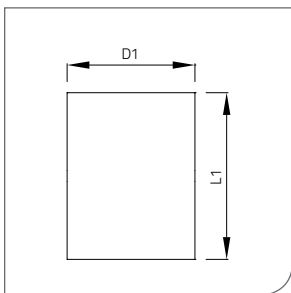
### Slab Repair Coupling



#### Slab Repair Coupling DWV Sewer SCJ

CODE	DESCRIPTION	D1	D2	L1	L2
SLAB040	40mm DWV SLAB REPAIR COUPLING	40	43	100	230
SLAB050	50mm DWV SLAB REPAIR COUPLING	50	55	100	230
SLAB065	65mm DWV SLAB REPAIR COUPLING	63	69	100	230
SLAB080	80mm DWV SLAB REPAIR COUPLING	75	82	100	230
SLAB090	90mm DWV SLAB REPAIR COUPLING	86	94	100	230
SLAB100	100mm DWV SLAB REPAIR COUPLING	102	111	100	230
SLAB150	150mm DWV SLAB REPAIR COUPLING	151	160	100	230
SLAB225	225mm DWV SLAB REPAIR COUPLING	237	250	150	330
SLAB300	300mm DWV SLAB REPAIR COUPLING	301	315	150	330
SLAB375	375mm DWV SLAB REPAIR COUPLING	375	400	150	330

Slab repair couplings are supplied standard with a SCJ internal spigot at one end and a SCJ spigot at the other end. Slab repair couplings can be supplied socketed upon request. Please contact Aymroo for non-standard fitting formats and pricing.

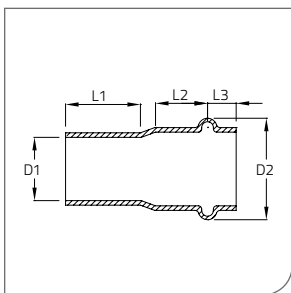


## DWV SEWER FITTINGS

### Slip Coupling

#### Slip Coupling DWV Sewer SCJ F+F (Repair Coupling)

CODE	DESCRIPTION	D1	L1
SLCPSR150	150mm DWV SLIP COUPLING	DN150	250
SLCPSR225	225mm DWV SLIP COUPLING	DN225	270
SLCPSR300	300mm DWV SLIP COUPLING	DN300	290
SLCPSR375	375mm DWV SLIP COUPLING	DN375	290



## DWV SEWER FITTINGS

### Rubber Ring Adaptor

#### Rubber Ring Adaptor RRJ F+M

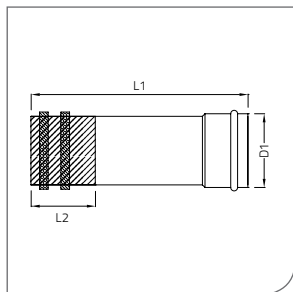
CODE	DESCRIPTION	D1	D2	L1	L2	L3
MSRR100	100mm RUBBER RING ADAPTOR	DN100	132	55	45	30
MSRR150	150mm RUBBER RING ADAPTOR	DN150	185	80	55	40
MSRR225	225mm RUBBER RING ADAPTOR	DN225	287	125	75	50
MSRR300	300mm RUBBER RING ADAPTOR	DN300	345	175	120	50
MSRR375	375mm RUBBER RING ADAPTOR	DN375	550	200	150	100

Rubber ring adaptors are formed from DWV pipe and supplied standard with a rubber ring socket, rubber ring and a spigot. Aymroo's Rubber Ring Adaptors are the ideal fitting to convert SCJ fittings to a rubber ring joint.



## DWV SEWER FITTINGS

### Access Chamber Coupling



#### Access Chamber Coupling RRJ M+F (Sanded Manhole Coupling)

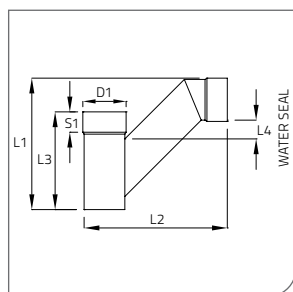
CODE	DESCRIPTION	D1	L1	L2
ACCESS100500	100 X 500 ACCESS CHAMBER CONNECTOR (Sanded)	DN100	500	150
ACCESS150500	150 X 500 ACCESS CHAMBER CONNECTOR (Sanded)	DN150	506	150
ACCESS225500	225 X 500 ACCESS CHAMBER CONNECTOR (Sanded)	DN225	566	150
ACCESS300500	300 X 500 ACCESS CHAMBER CONNECTOR (Sanded)	DN300	609	150
ACCESS375500	375 X 500 ACCESS CHAMBER CONNECTOR (Sanded)	DN375	600	190

Access Chamber Couplings are fabricated to AS/NZS1260, with a 150mm long sanded end for keying to concrete access chambers. Unsanded and Unsocketed versions available upon request. Coupling length excluding socket is 500mm. Other lengths are available upon request. RRJ socket fitting with sanded spigot is standard. Please contact Aymroo for non-standard fitting formats and pricing.



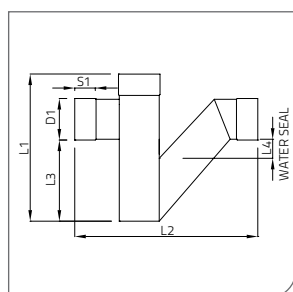
## DWV SEWER FITTINGS

### Boundary Traps



#### Disconnecter Trap (Boundary Trap)

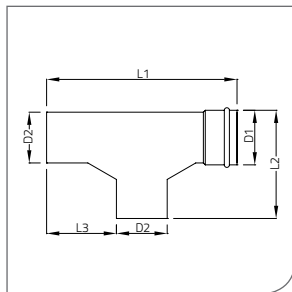
CODE	DESCRIPTION	D1	S1	L1	L2	L3	L4
TRAP150	150mm DISCONNECTOR TRAP (BOUNDARY TRAP)	DN150	80	516	563	384	100
TRAP225	225mm DISCONNECTOR TRAP (BOUNDARY TRAP)	DN225	125	751	856	552	100
TRAP300	300mm DISCONNECTOR TRAP (BOUNDARY TRAP)	DN300	175	1050	1000	600	100



#### No Loss Boundary Trap DWV Sewer SCJ F+F

CODE	DESCRIPTION	D1	S1	L1	L2	L3	L4
TRAPNL150	150mm NO LOSS BOUNDARY TRAP	DN150	76	620	770	380	205
TRAPNL225	225mm NO LOSS BOUNDARY TRAP	DN225	125	950	1080	515	100
TRAPNL300	300mm NO LOSS BOUNDARY TRAP	DN300	175	1122	1327	578	100

Boundary Traps can be used in any application where an inline water seal is required in a sewer line. Boundary Traps (Disconnecter Trap) and No Loss Boundary Trap versions are both available. Please contact Aymroo for non-standard fitting formats and pricing.



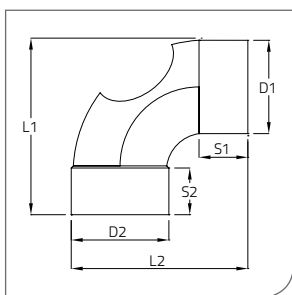
## DWV SEWER FITTINGS

### Drop Junction

#### Drop Junction RRJ F+M (Drop Tee)

CODE	DESCRIPTION	D1	D2	L1	L2	L3
DRJN150150	150 X 150 DROP JUNCTION	DN150	DN150	600	341	220
DRJN225225	225 X 225 DROP JUNCTION	DN225	DN225	746	494	240
DRJN300300	300 X 300 DROP JUNCTION	DN300	DN300	940	623	302

Used in manhole applications, Aymroo Drop Junctions have gussets for easy manipulation of sewer line inspection cameras and improved flow of waste water. Aymroo Drop Junctions are supplied standard with RRJ Socket, SCJ line and branch Spigots. Also referred to as a Drop Tee.



## DWV SEWER FITTINGS

### Drop Bend

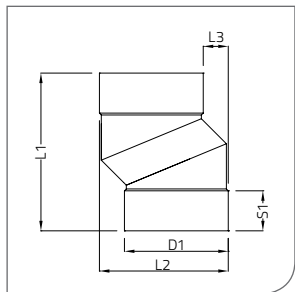
#### Drop Bend SCJ M+F

CODE	DESCRIPTION	D1	S1	D2	S2	L1	L2
DRBD100100	100 x 100 DROP BEND	DN100	55	DN100	55	205	208
DRBD150150	150 x 150 DROP BEND	DN150	80	DN150	80	304	307
DRBD225225	225 x 225 DROP BEND	DN225	110	DN225	110	430	424
DRBD225150	225 x 150 DROP BEND	DN225	110	DN150	80	596	423
DRBD300225	300 X 225 DROP BEND	DN300	175	DN225	110	733	546



## DWV SEWER FITTINGS

### Offset



#### Offsets DWV SCJ F+F

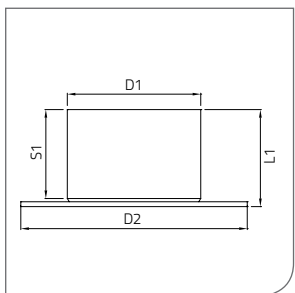
CODE	DESCRIPTION	D1	S1	L1	L2	L3
OFFSR225	225mm DWV OFFSET	DN225	125	498	364	100
OFFSR300	300mm DWV OFFSET	DN300	175	625	430	100
OFFSR375	375mm DWV OFFSET	DN375	200	726	530	100

Offsets are supplied standard with a 45° angle and 100mm offset of socket centres. Offsets with alternative lengths and traverse or other special angles are available on request. Please contact Aymroo to specify your Offset requirements and confirm pricing.



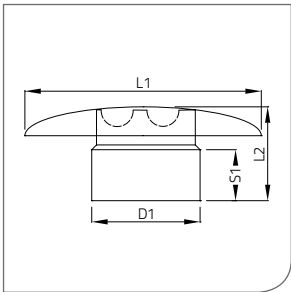
## DWV SEWER FITTINGS

### Flanges



#### Flanges DWV Sewer (Undrilled)

CODE	DESCRIPTION	D1	D2	S1	L1
FLANSR100	100mm DWV FLANGE	DN100	215	55	68
FLANSR150	150mm DWV FLANGE	DN150	280	80	94
FLANSR225	225mm DWV FLANGE	DN225	405	125	147
FLANSR300	300mm DWV FLANGE	DN300	455	175	198
FLANSR375	375mm DWV FLANGE	DN375	580	200	223



# DWV SEWER FITTINGS

## Vent Cowls

Vent Cowls SCJ F					
CODE	DESCRIPTION	D1	S1	L1	L2
VENT100	100mm VENT COWL	DN100	55	275	101
VENT150	150mm VENT COWL	DN150	80	371	147
VENT225	225mm VENT COWL	DN225	125	453	206
VENT300	300mm VENT COWL	DN300	175	550	272

# SPECIALISED FITTINGS



**A**ymroo are experts in the production of special 'one-off' jobs, special fittings and custom-built fabrications, including modifications to our own line of products and fittings where required.

**If you can imagine it, we can make it.**

Whatever your idea, or if you are in a situation that a standard product can't solve, give Aymroo a call on **1300 057 588**.

We'll come up with a fitting that perfectly suits your needs.

To order a specialised fitting, please send a drawing of your requirements with your contact details and we will be more than happy to discuss a solution to your needs.

## GLOSSARY OF TERMS

---

<b>AS/NZ 1260:2009</b>	Australian/New Zealand Standard. PVC-U pipes and fittings for drain waste and vent applications
<b>AS/NZ 1254:2010</b>	Australian/New Zealand Standard. PVC-U pipes and fittings for storm water and surface water applications
<b>ATS 5200.006-2005</b>	Australian Technical Specifications. Technical specification for plumbing and drainage products. Part 6: Reflux Valves – Sewerage
<b>Bend</b>	DWV (Sewer) Corner
<b>BEP-uPVC</b>	Best Environmental Practice Unplasticised Poly Vinyl Chloride
<b>Branch</b>	Take Off, Junction
<b>BTS</b>	Bolted Trap Screw
<b>DN</b>	Diameter Nominal
<b>DWV</b>	Drain Waste Vent, Sewer
<b>EW</b>	Earthen Ware, Clay Pipe
<b>Elbow</b>	Stormwater Corner
<b>FRC</b>	Fibre Reinforced Concrete Pipe
<b>F&amp;F</b>	Female Socket and Female Socket, F+F
<b>IO</b>	Inspection Opening
<b>ISO9001: 2008</b>	Quality Management System
<b>LIT</b>	Level Invert Taper, Reducer, Level Invert Reducer
<b>LTS</b>	Locking Trap Screw
<b>M&amp;F</b>	Male Spigot and Female Socket, M+F
<b>M&amp;M</b>	Male Spigot and Male Spigot, M+M
<b>RRJ</b>	Rubber Ring Joint
<b>SCJ</b>	Solvent Cement Joint, Solvent Weld Joint (SWJ)
<b>SN</b>	Stiffness Number
<b>Socket</b>	Female, F
<b>Spigot</b>	Male, M
<b>SW</b>	Stormwater
<b>TAC</b>	Threaded Access Cap
<b>UPVC</b>	Unplasticized Poly Vinyl Chloride, uPVC , PVCU
<b>Watermark</b>	Watermark, product with the W logo complies with the relevant Standard



# INDEX

## A

Access Cap (Locking & Threaded)	32
Access Chamber Coupling	37
AS/NZS 1260	2, 42
AS/NZS1254	2, 42
Aymroo Plumbing Fittings	2

## B

Bend (Elbow) DWV	24
Bend (Lobster) DWV	26
Bolted Trap Screw	32
Boundary Trap	37
Boundary Trap (No Loss)	37
Boss Connector 45° DWV	29
Boss Connector 45° SW	12
Boss Connector 90° DWV	30
Boss Connector 90° SW	13

## C

Clamp On Inspection Opening DWV	33
Coupling Access Chamber	37
Coupling Internal SW	17
Coupling Slab Repair DWV	35
Coupling Slab Repair SW	16
Coupling Slip DWV	36
Coupling Slip SW	17
Coupling Straight DWV	35
Coupling Straight SW	16
Coupling Threaded DWV	35

## D

Disconnecter Trap	37
Downpipe Adaptor	18
Drop Bend	38
Drop Junction (Drop Tee)	38
DWV Fittings	23

## E

Elbow SW	8
End Cap SW	14
End Cap DWV	31
End Cap Threaded DWV	31

## F

Flange (Undrilled) DWV	39
Flange (Undrilled) SW	19
Flap Valve	14
Flap Valve Inline	15
Flap Valve Mozzie	14
Frog Flap	14

## G

Glossary Of Terms	42
-------------------	----

## H

Hot Water Cylinder Safe Tray	20
------------------------------	----

## I

Inline Flap Valve	15
Inspection Opening (IO) DWV	33
Internal Coupling SW	17

## J

Joining Instructions	3
Junction 45° DWV	27
Junction 45° SW	10
Junction 90° DWV	28
Junction 90° SW	11

## K

Kerb Adaptors	19
---------------	----

## L

Level Invert Taper DWV	34
Level Invert Taper SW	15
Lobster Bend DWV	26
Locking Access Cap	32
Locking Trap Screw	32

## M

Mozzie Flap Valve	14
-------------------	----

## N

No Loss Boundary Trap	37
-----------------------	----

## O

Offsets DWV	39
Offsets SW	18

## P

Pipe Slotting	21
---------------	----

## Q

Quality Assurance	2
-------------------	---

## R

Reducer DWV (Level Invert Taper)	34
Reducer SW (Level Invert Taper)	15
Reflux Valve	34
Repair Coupling DWV	36
Repair Coupling SW	17
Rubber Ring Adaptor	36

## S

Safe Tray (Hot Water Cylinder)	20
Safe Waste Tray	20
Sanded Access Chamber Coupling	37
Sewer Fittings - DWV Fittings	23
Slab Repair Coupling DWV	35
Slab Repair Coupling SW	16
Slip Coupling (Repair Coupling) DWV	36
Slip Coupling (Repair Coupling) SW	17
Specialised Fittings	41
Stormwater Fittings	7
Straight Coupling DWV	35
Straight Coupling SW	16

## T

Tapping Saddle DWV Boss Connector	29
Tapping Saddle SW Boss Connector	12
Trap Screw	32
Threaded End Cap DWV	31

## V

Valve Reflux DWV	34
Valve Flap	14
Valve Inline Flap	15
Vent Cowl	40

## W

Watermark	2, 42
-----------	-------

[illegible]





**Aymroo**  
INNOVATE | CREATE | CONNECTProducts

p 1300 057 588 | f 1300 052 857 | [www.aymroo.com.au](http://www.aymroo.com.au)

PVC Plumbing Fittings | Maintenance Shafts | Fabrications | Civil Products